

# Basic Report

---



**Title:** Typewriter  
**Date:** 1930-1940  
**Medium:** Metal, wood



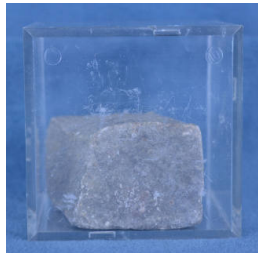
**Title:** Typewriter  
**Date:** 1950-1970  
**Medium:** metal, plastic, leather



**Title:** Camera  
**Date:** 1910-1915  
**Medium:** metal, glass, plastic, leather, canvas



**Title:** Box, Music  
**Medium:** wood, metal, glass



**Title:** Stone, Paving  
**Medium:** concrete, plastic



**Title:** Thermometer  
**Medium:** plastic, mercury



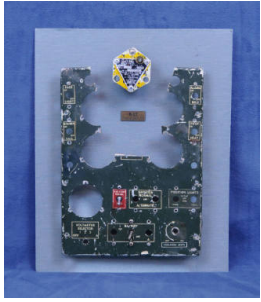
**Title:** Clock  
**Medium:** metal, glass, plastic



**Title:** Punch, Three-hole  
**Medium:** metal



**Title:** Box, pencil  
**Medium:** cardboard, paper, wood, lead



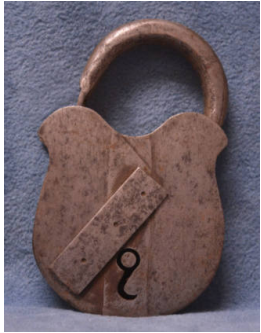
**Title: Console, bomber**  
**Date:** 1944  
**Medium:** metal, cardstock



**Title: Cleaner, pipe**  
**Medium:** metal, plastic



**Title: Radio**  
**Medium:** wood, metal, plastic



**Title: Padlock**  
**Date:** 1967-1979  
**Medium:** metal



**Title: Padlock**  
**Date:** 1967-1979  
**Medium:** ceramic