

# Basic Report

---



**Title:** Untitled  
**Date:** 1964  
**Medium:** etching on paper



**Title:** Untitled  
**Date:** 1970  
**Medium:** ink on paper



**Title:** Untitled  
**Date:** 1970  
**Medium:** ink on paper



**Title:** Drawing  
**Medium:** paper



**Title:** Folio, lithograph  
**Date:** 1986  
**Medium:** paper, cardstock



**Title:** Card, greeting  
**Medium:** cardstock, wheat



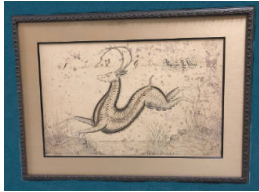
**Title:** Card, Christmas  
**Medium:** cardstock, wheat



**Title:** Card, Christmas  
**Medium:** cardstock, wheat



**Title:** Hanging, wall  
**Medium:** cardboard, matboard, wheat



**Title:** Drawing, framed  
**Date:** 1883  
**Medium:** paper, glass, wood



**Title:** Drawings  
**Date:** 1883-1920  
**Medium:** paper, cardstock



**Title:** Writings, embellished  
**Date:** 1890-1939  
**Medium:** paper, cardstock



**Title:** Drawing  
**Date:** 1969  
**Medium:** pencil on paper



**Title:** Caligraphy  
**Date:** 1957  
**Medium:** paper



**Title:** Drawing  
**Date:** 1890-1962  
**Medium:** paper, wood, plexi



**Title:** Drawing  
**Date:** 1890-1962  
**Medium:** paper, wood, plexi



**Title:** Drawing  
**Date:** 1890-1962  
**Medium:** paper, wood, plexi



**Title:** Drawing  
**Date:** 1890-1962  
**Medium:** paper



**Title:** Drawing  
**Date:** 1890-1962  
**Medium:** paper, wood, plexi



**Title:** Calligraphy,  
framed  
**Medium:** wood, paper,  
glass, metal



**Title:** Drawing  
**Medium:** paper



**Title:** Drawing  
**Medium:** paper



**Title:** Drawing  
**Date:** 1983  
**Medium:** paper



**Title:** Drawing  
**Date:** 1982  
**Medium:** paper