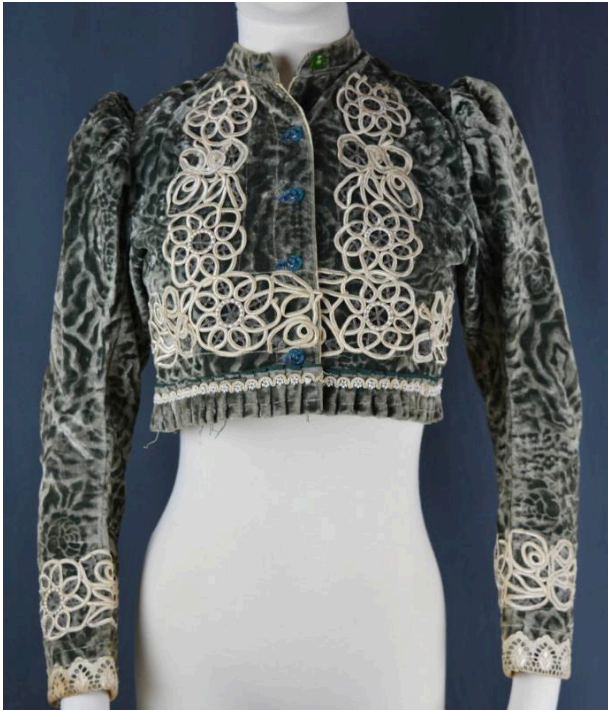


Basic Detail Report



Jacket

Date

1910-1930

Medium

Textile

Description

greenish-grey velvet jacket with white scroll patterns applied in trim; clear beads sewn in the trim; 4 blue buttons and one green button on front; bottom trimmed with tiny flowers made from white beads ---- Donor unsure if grandparents brought the pieces with them or if the clothing was sent to them; her grandparents were Josef Sramek (Pramek?) and Rosalie Malepa and they came to the USA before WWI. First they lived in Toledo, Ohio, then

New Jersey and then New York City. ---- ----

Dimensions

Overall: 15 in. (38.1 cm)