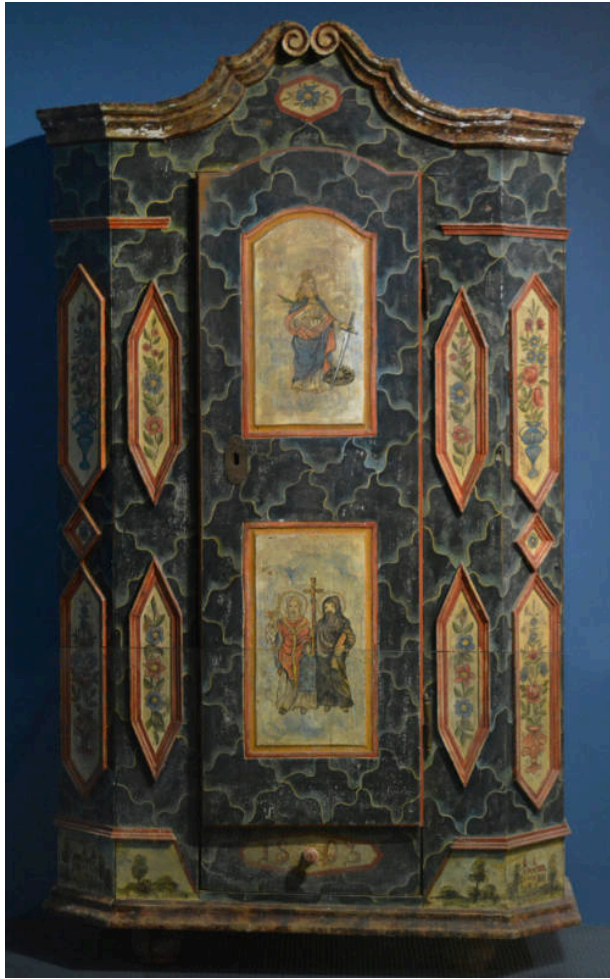


# Basic Detail Report

---



## Armoire

### Date

1803 (?)

### Medium

wood

### Description

All sides, save the back, have the same painted background; wavy diamond design in dark and light blue (each diamond almost looks like a leaf); red trim along the back corners (where it meets the wall); red trim around the bottom edge - missing three pieces (b-d); one of the two longer bottom pieces has a small piece of wood affixed to it; trim around top edge, possibly white - missing two pieces (e-f); larger of two top pieces is background piece with rounded piece of trim affixed to it; background piece has straight bottom and rounded top with slight scallop at center; scalloped trim is on left side (other top trim piece is the for the right side of the background piece); dark and light blue background pattern from the rest of the armoire is painted beneath

the trim; a circular cream section with a red outline in the center; a dark blue flower and green leaves are within it ---- two rectangular sections on door front (both have a white background mixed with light blue): ---- top section - rounded top edge; painting of woman wearing a long white tunic with a blue cape/red lining; blonde hair; wears a crown; holds a sword in left hand and a long green stem with a few leaves in the right; a shield lies on the ground next to her ---- bottom section - old and young men standing with a wooden cross in between them; the old man wears a long white tunic with red robes; he holds a blue tablet with figures on it in his right hand; his left hand points upward; young man has blond brown hair and beard; brown robes with hood up; holds a cross in his right hand and a red book in the left ---- red trim around all sides of door; top is rounded; small square lock on inside of door with key (g) ---- two elongated diamond shapes on either side of door - small pink and blue flowers with green leaves and vines; cream background; two more are next to these (wider with small diamond shape between them; cream background with blue flower within) - small vase with pink and blue flowers, and green vines and leaves (vase in top diamond is blue and pink in bottom, both have cream background); two more on armoire sides (much wider with small points on sides) - the same floral designs as the previous diamond shapes, except the top vase is pink and bottom is blue; ---- all elongated diamond-shaped sections are lined with a thin red trim ---- drawer under door; red handle; cream section with red edges painted

around handle; 1803 painted on it in red ---- four round legs; red ---- back of armoire is a solid brownish color; difficult to tell if it is finished, painted, or bare ---- carved and painted in the turnovskeho or podkrkonosi style

### **Dimensions**

Overall: 75 1/2 x 43 x 20 in. (191.8 x 109.2 x 50.8 cm)