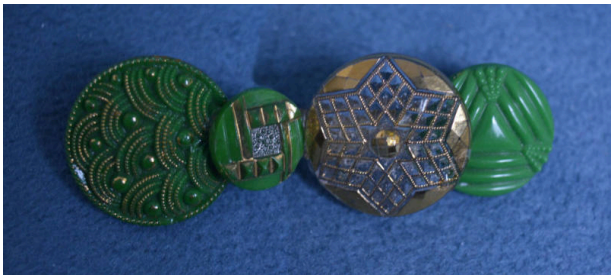


Basic Detail Report



Pin

Date

1930-1959

Medium

metal, glass

Description

luster glass pin; four circles adhered into a horizontal line; three textured green circles, two with gold enamel accenting; one clear glass circle painted nearly entirely with gold enamel; textured and unpainted sections form a star

Dimensions

Other: 1 × 2.5 in. (2.5 × 6.4 cm)