

# Basic Report

---



**Title: Box, Music**  
**Medium:** wood, metal, glass



**Title: Box, pencil**  
**Medium:** cardboard, paper, wood, lead



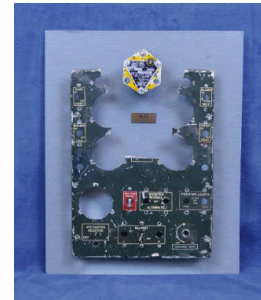
**Title: Camera**  
**Date:** 1910-1915  
**Medium:** metal, glass, plastic, leather, canvas



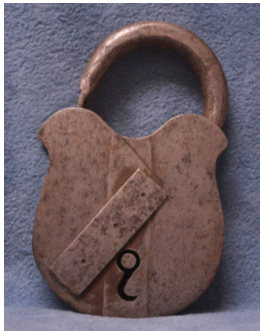
**Title: Cleaner, pipe**  
**Medium:** metal, plastic



**Title: Clock**  
**Medium:** metal, glass, plastic



**Title: Console, bomber**  
**Date:** 1944  
**Medium:** metal, cardstock



**Title: Padlock**  
**Date:** 1967-1979  
**Medium:** metal



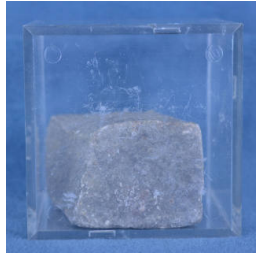
**Title: Padlock**  
**Date:** 1967-1979  
**Medium:** ceramic



**Title: Punch, Three-hole**  
**Medium:** metal



**Title: Radio**  
**Medium:** wood, metal, plastic



**Title: Stone, Paving**  
**Medium:** concrete, plastic



**Title: Thermometer**  
**Medium:** plastic, mercury



**Title: Typewriter**  
**Date:** 1930-1940  
**Medium:** Metal, wood



**Title: Typewriter**  
**Date:** 1950-1970  
**Medium:** metal, plastic, leather