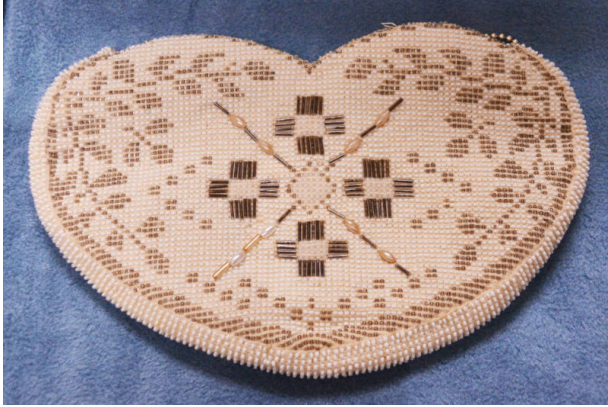


Basic Detail Report



Purse

Medium

textile, metal, glass

Description

cream-colored, heart-shaped purse covered with tiny white and silver beads; an X made of long silver and cream beads lies in the center of the front; in the four spaces created are plus symbols formed from long, silver

beads; leafy patterns made of tiny silver beads run around the edges of the purse; the entire design is mirrored on the back side, but in only tiny white and silver beads; narrow handle covered with beads affixed on back; zipper across top for closure with looped chain of silver balls to open; small pocket inside with tag sewn at its top that reads Made in Czechoslovakia

Dimensions

Other: 7.75 × 5 in. (19.7 × 12.7 cm)